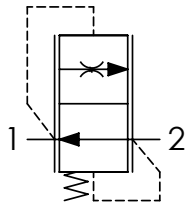


VCC140 VALVOLE CONTROLLO DISCESA FISSE COMPENSATE
FIXED FLOW CONTROL VALVES - PRESSURE COMPENSATED



SCHEMA IDRAULICO / HYDRAULIC CIRCUIT



TIPO TYPE	PORTATA MAX MAX FLOW l/min-USgpm	PRESSIONE MAX MAX PRESSURE bar-PSI	COPPIA DI SERRAGGIO TIGHTENING TORQUE Nm-lbt ft	PESO APPROX APPROX WEIGHT kg-lbt
VCC140	15 (3.96)	250 (3625)	4 (3)	0,014 (0.031)

DATI TECNICI / TECHNICAL DATA

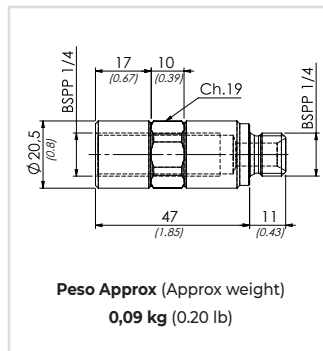
olio idraulico - Mineral oil	ISO 6743/4 (DIN 51524)
Viscosità olio - Oil viscosity	15-250 mm ² /s (15 to 250 cSt)
Classe di contaminazione max Max contamination index	ISO 4406:1999 Classe 19/17/14
Temperatura dell'olio - Oil temperature	-20°C +80°C -4°F +176°F
Temperatura ambiente - Ambient temperature	-20°C +50°C -4°F +122°F
È indispensabile l'utilizzo di un filtro per proteggere la valvola (filtrazione consigliata 15 µm) It is necessary a filter use to protect the valve (advised filtration 15 µm)	

CODICE ORDINAZIONE ORDERING CODE

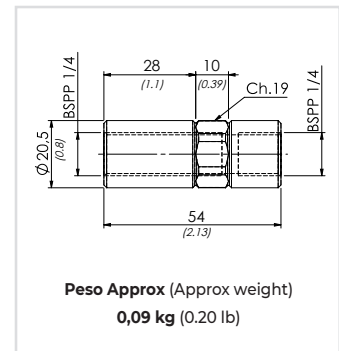
01	02	03
VCC140		

01	VALVOLE CONTROLLO DISCESA FISSE COMPENSATE (FIXED FLOW CONTROL VALVES - PRESSURE COMPENSATED)		VCC140
02	VERSIONE (VERSION)	L = 26,5 (1.02)	C
		L = 23 (0.90)	
03	PORTATA CONTROLLATA A 100 BAR ± 10% (CONTROLLED FLOW AT 100 BAR ± 10 %)	1 l/min (0.26 USgpm)	1
		2 l/min (0.53 USgpm)	2
		3 l/min (0.79 USgpm)	3
		4 l/min (1.06 USgpm)	4
		5 l/min (1.32 USgpm)	5
		6 l/min (1.58 USgpm)	6
		7 l/min (1.85 USgpm)	7
		8 l/min (2.11 USgpm)	8
		9 l/min (2.38 USgpm)	9
		10 l/min (2.64 USgpm)	10
		11 l/min (2.90 USgpm)	11
		12 l/min (3.17 USgpm)	12
		15 l/min (3.96 USgpm)	15

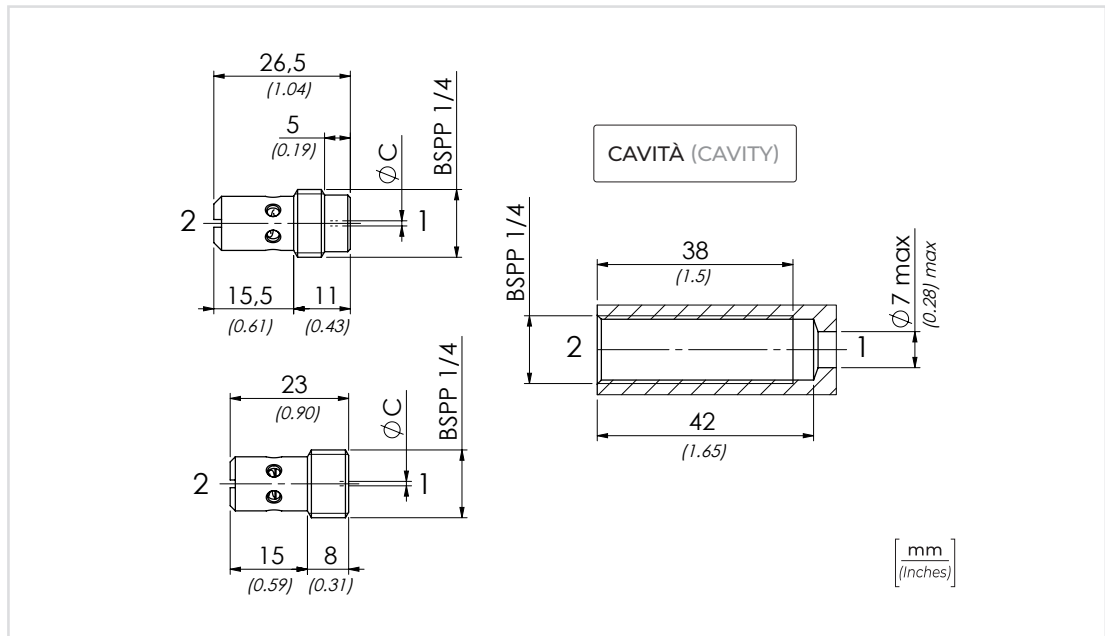
TIPO / TYPE 61100160



TIPO / TYPE 61100159



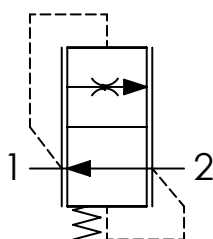
TIPO (TYPE)	Ø C
VCC1401	1 (0.04)
VCC1402	1,2 (0.05)
VCC1403	1,5 (0.06)
VCC1404	1,7 (0.07)
VCC1405	1,9 (0.07)
VCC1406	2,1 (0.08)
VCC1407	2,3 (0.09)
VCC1408	2,4 (0.09)
VCC1409	2,7 (0.11)
VCC14010	2,8 (0.11)
VCC14011	3,1 (0.12)
VCC14012	3,3 (0.13)
VCC14015	5 (0.20)



VCC380 VALVOLE CONTROLLO DISCESA FISSE COMPENSATE FIXED FLOW CONTROL VALVES - PRESSURE COMPENSATED



SCHEMA IDRAULICO / HYDRAULIC CIRCUIT

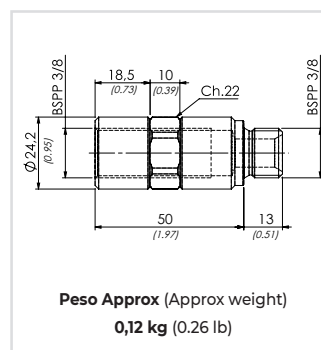


CODICE ORDINAZIONE
ORDERING CODE

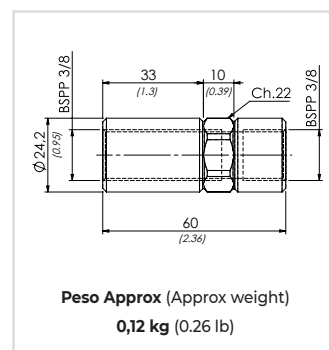
01	02
VCC380	

01	VALVOLE CONTROLLO DISCESA FISSE COMPENSATE (FIXED FLOW CONTROL VALVES - PRESSURE COMPENSATED)	VCC380
02	PORTATA CONTROLLATA A 100 BAR ± 10% (CONTROLLED FLOW AT 100 BAR ± 10 %)	1 l/min (0.26 USgpm) 1
		2 l/min (0.53 USgpm) 2
		3 l/min (0.79 USgpm) 3
		4 l/min (1.06 USgpm) 4
		5 l/min (1.32 USgpm) 5
		6 l/min (1.58 USgpm) 6
		7 l/min (1.89 USgpm) 7
		8 l/min (2.11 USgpm) 8
		9 l/min (2.38 USgpm) 9
		10 l/min (2.64 USgpm) 10
		11 l/min (2.90 USgpm) 11
		12 l/min (3.17 USgpm) 12
		16 l/min (4.22 USgpm) 16
		18 l/min (4.75 USgpm) 18

TIPO / TYPE
61100162



TIPO / TYPE
61100161

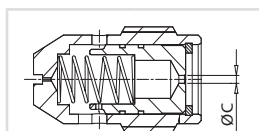


DATI TECNICI / TECHNICAL DATA

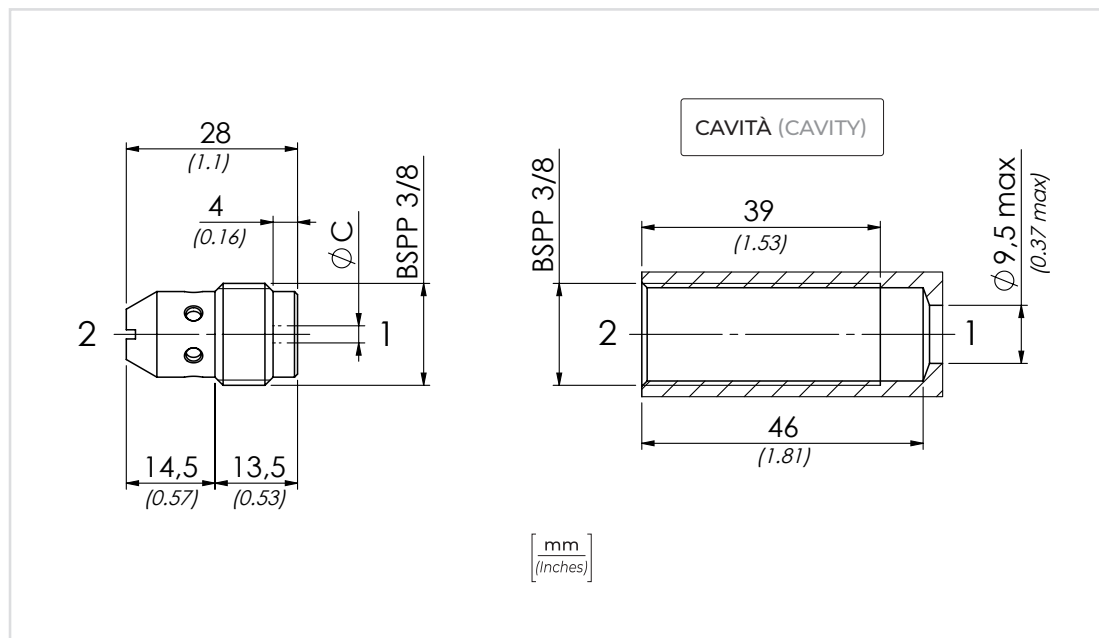
olio idraulico - Mineral oil	ISO 6743/4 (DIN 51524)
Viscosità olio - Oil viscosity	15-250 mm ² /s (15 to 250 cSt)
Classe di contaminazione max Max contamination index	ISO 4406:1999 Classe 19/17/14
Temperatura dell'olio - Oil temperature	-20°C +80°C -4°F +176°F
Temperatura ambiente - Ambient temperature	-20°C +50°C -4°F +122°F

È indispensabile l'utilizzo di un filtro per proteggere la valvola (filtrazione consigliata 15 µm)
It is necessary a filter use to protect the valve (advised filtration 15 µm)

TIPO TYPE	PORTATA MAX MAX FLOW l/min-USgpm	PRESSIONE MAX MAX PRESSURE bar-PSI	COPPIA DI SERRAGGIO TIGHTENING TORQUE Nm-lbt ft	PESO APPROX APPROX WEIGHT kg-lbt
VCC380	18 (4.8)	250 (3625)	6 (4.5)	0,024 (0.053)



TIPO (TYPE)	Ø C
VCC3801	0,6 (0.02)
VCC3802	1,4 (0.06)
VCC3803	1,7 (0.07)
VCC3804	2 (0.08)
VCC3805	2,3 (0.09)
VCC3806	2,6 (0.10)
VCC3807	2,8 (0.11)
VCC3808	3,1 (0.12)
VCC3809	3,3 (0.13)
VCC38010	3,5 (0.14)
VCC38011	3,7 (0.15)
VCC38012	4 (0.16)
VCC38016	5 (0.12)
VCC38018	5,5 (0.22)

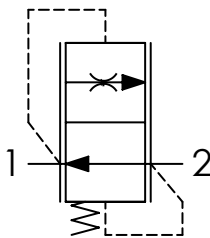


I dati presenti nel catalogo possono essere soggetti a variazioni, pertanto OLEOWEB si riserva il diritto di apporre modifiche in qualunque momento e senza alcun preavviso. OLEOWEB reserves the right to modify the products at any time and without notice: the technical data of the catalogue can consequently change.

VCC120 VALVOLE CONTROLLO DISCESA FISSE COMPENSATE
FIXED FLOW CONTROL VALVES - PRESSURE COMPENSATED



SCHEMA IDRAULICO / HYDRAULIC CIRCUIT



DATI TECNICI / TECHNICAL DATA

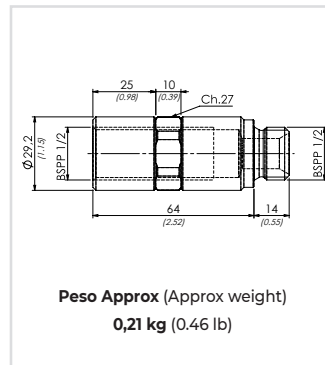
Olio idraulico - Mineral oil	ISO 6743/4 (DIN 51524)
Viscosità olio - Oil viscosity	15-250 mm ² /s (15 to 250 cSt)
Classe di contaminazione max Max contamination index	ISO 4406:1999 Classe 19/17/14
Temperatura dell'olio - Oil temperature	-20°C +80°C -4°F +176°F
Temperatura ambiente - Ambient temperature	-20°C +50°C -4°F +122°F
È indispensabile l'utilizzo di un filtro per proteggere la valvola (filtrazione consigliata 15 µm) It is necessary a filter use to protect the valve (advised filtration 15 µm)	

CODICE ORDINAZIONE
ORDERING CODE

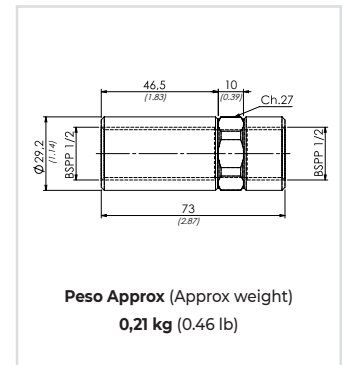
01	02
VCC120	

01	VALVOLE CONTROLLO DISCESA FISSE COMPENSATE (FIXED FLOW CONTROL VALVES - PRESSURE COMPENSATED)	VCC120
02	PORTATA CONTROLLATA A 100 BAR ± 10% (CONTROLLED FLOW AT 100 BAR ± 10 %)	9 l/min (2.38 USgpm) 9
		12 l/min (3.17 USgpm) 12
		15 l/min (3.96 USgpm) 15
		17 l/min (4.49 USgpm) 17
		21 l/min (5.54 USgpm) 21
		25 l/min (6.60 USgpm) 25
		27 l/min (7.1 USgpm) 27
		32 l/min (8.45 USgpm) 32
		35 l/min (9.24 USgpm) 35
		40 l/min (10.56 USgpm) 40
		47 l/min (12.4 USgpm) 47

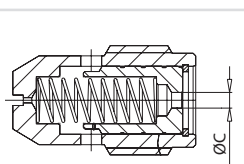
TIPO / TYPE
61100033



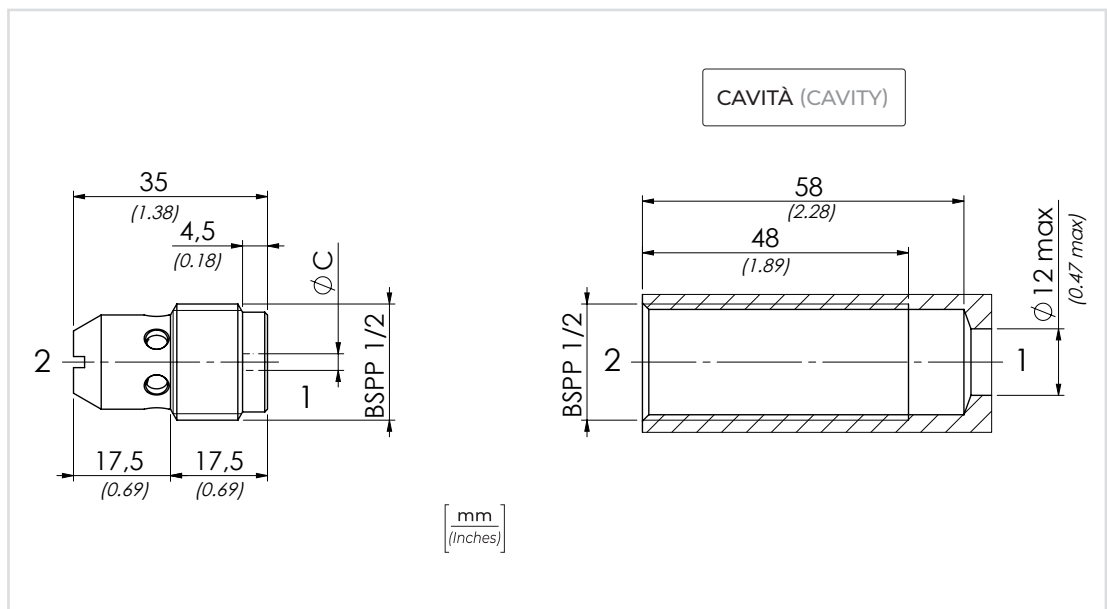
TIPO / TYPE
61100094



TIPO TYPE	PORTATA MAX MAX FLOW l/min-USgpm	PRESSIONE MAX MAX PRESSURE bar-PSI	COPPIA DI SERRAGGIO TIGHTENING TORQUE Nm-lbt ft	PESO APPROX APPROX WEIGHT kg-lbt
VCC120	47 (12.4)	250 (3625)	10 (7.5)	0,050 (0.11)



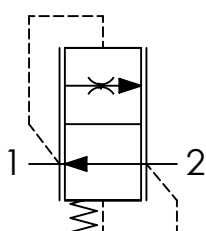
TIPO (TYPE)	Ø C
VCC1209	2 (0.08)
VCC12012	2,5 (0.10)
VCC12015	3 (0.12)
VCC12017	3,2 (0.13)
VCC12021	3,5 (0.14)
VCC12025	4 (0.16)
VCC12027	4,2 (0.17)
VCC12032	4,5 (0.18)
VCC12035	5 (0.20)
VCC12040	5,5 (0.22)
VCC12047	6 (0.24)



VSCR6 VALVOLE CONTROLLO DISCESA FISSE COMPENSATE
FIXED FLOW CONTROL VALVES - PRESSURE COMPENSATED

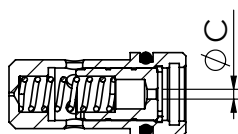


SCHEMA IDRAULICO / HYDRAULIC CIRCUIT



DATI TECNICI / TECHNICAL DATA

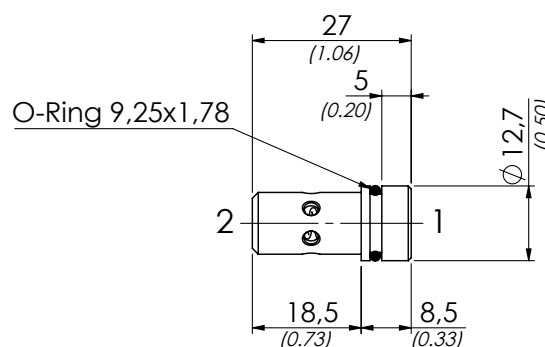
Olio idraulico - Mineral oil	ISO 6743/4 (DIN 51524)
Viscosità olio - Oil viscosity	15-250 mm²/s (15 to 250 cSt)
Classe di contaminazione max Max contamination index	ISO 4406:1999 Classe 19/17/14
Temperatura dell'olio - Oil temperature	-20°C +80°C -4°F +176°F
Temperatura ambiente - Ambient temperature	-20°C +50°C -4°F +122°F
È indispensabile l'utilizzo di un filtro per proteggere la valvola (filtrazione consigliata 15 µm) It is necessary a filter use to protect the valve (advised filtration 15 µm)	



TIPO (TYPE)	Ø C
VSCR61	1 (0.04)
VSCR62	1,2 (0.05)
VSCR63	1,5 (0.06)
VSCR64	1,7 (0.07)
VSCR65	1,9 (0.07)
VSCR66	2,1 (0.08)
VSCR67	2,3 (0.09)
VSCR68	2,4 (0.09)
VSCR69	2,7 (0.11)
VSCR610	2,8 (0.11)
VSCR611	3,1 (0.12)
VSCR612	3,3 (0.13)

CODICE ORDINAZIONE ORDERING CODE	01 VSCR6	02
--	--------------------	----

01	VALVOLE CONTROLLO DISCESA FISSE COMPENSATE (FIXED FLOW CONTROL VALVES - PRESSURE COMPENSATED)	VSCR6
02	PORTATA CONTROLLATA A 100 BAR ± 10% (CONTROLLED FLOW AT 100 BAR ± 10%)	1 l/min (0.26 USgpm) 1
		2 l/min (0.53 USgpm) 2
		3 l/min (0.79 USgpm) 3
		4 l/min (1.06 USgpm) 4
		5 l/min (1.32 USgpm) 5
		6 l/min (1.58 USgpm) 6
		7 l/min (1.85 USgpm) 7
		8 l/min (2.11 USgpm) 8
		9 l/min (2.38 USgpm) 9
		10 l/min (2.64 USgpm) 10
		11 l/min (2.90 USgpm) 11
		12 l/min (3.17 USgpm) 12



[mm]
[inches]

TIPO TYPE	PORTATA MAX MAX FLOW l/min-USgpm	PRESSIONE MAX MAX PRESSURE bar-PSI	PESO APPROX APPROX WEIGHT kg-lbt
VSCR6	12 (3.20)	250 (3625)	0,012 (0.026)

I dati presenti nel catalogo possono essere soggetti a variazioni, pertanto OLEOWEB si riserva il diritto di apporre modifiche in qualunque momento e senza alcun preavviso. OLEOWEB reserves the right to modify the products at any time and without notice: the technical data of the catalogue can consequently change.

Aggiornamento - Update
21R-2021